

## Exterior design

EcoSport's dynamic new design brings it up-to-date with the Ford SUV family; the mid-sized Kuga and larger Edge. New front-end styling includes a fresh new bonnet profile, large trapezoidal grille design and distinctive angular headlights and fog light housings.

At the rear, new bumper and tail light designs deliver a design cleaner, more sculpted appearance.



## Wheels

New 17- and 18-inch alloy wheel designs complement the EcoSport's rugged, sporty character. Offered in a number

of finishes. Customers continue to be able to choose a distinctive, boot-mounted spare wheel option.



16-inch Magnetic Low Gloss Painted



16-inch Premier Aluminium



16-inch Sparkle Silver



17-inch Dark Tarnish



17-inch Flash Grey Machined



17-inch Shadow Silver



18-inch Absolut Black High Gloss Machined



18-inch Flash Grey Machined

## Colours

Customers can choose from 12 bold exterior colours; three solid colours, six metallic and three premium colours, including a special,

Ruby Red tinted clear coat and three-coat White Premium that delivers an intense depth of colour.



FROZEN WHITE



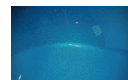
BLAZER BLUE



RACE RED



SHADOW BLACK



BLUE LIGHTNING



BURNISHED GLOW



SILK



MAGNETIC



MOONDUST SILVER



TIGER EYE



WHITE PLATINUM



RUBY RED

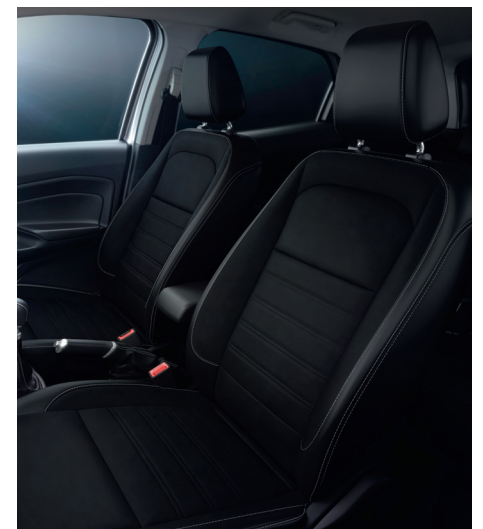
## Interior design

EcoSport delivers a new level of interior refinement with easier to use controls and soft-touch materials.



### ③ New seat designs

New seats designs are optimised for greater front and rear occupant comfort, and are available with partial leather.



### ④ Smart stowage

EcoSport features a number of smart stowage solutions, including a new super-strong height adjustable boot floor that can be raised to provide concealed storage, or lowered to increase luggage capacity.

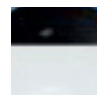


### Extended Painted Roof

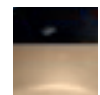
Customers can customise their EcoSport with different body and roof colour combinations.

Extended Painted Roof is available as standard on EcoSport ST-Line and is also offered on Titanium models.

### Titanium



Shadow Black on Frozen White



Shadow Black on Silk



Shadow Black on Tiger Eye



Shadow Black on Burnished Glow



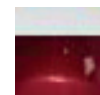
Shadow Black on Ruby Red



Frozen White on Shadow Black

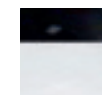


Frozen White on Burnished Glow



Frozen White on Ruby Red

### ST-Line



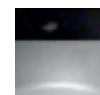
Shadow Black on Frozen White



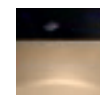
Shadow Black on Race Red



Shadow Black on Blazer Blue



Shadow Black on Moondust Silver



Shadow Black on Silk



Shadow Black on Tiger Eye



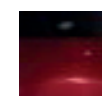
Shadow Black on Magnetic



Shadow Black on Burnished Glow



Shadow Black on Blue Lightning



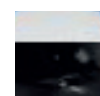
Shadow Black on Ruby Red



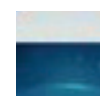
Shadow Black on White Platinum



Frozen White on Race Red



Frozen White on Shadow Black



Frozen White on Blue Lightning



Race Red on Frozen White



Race Red on Shadow Black



Tiger Eye on Shadow Black

### ① Heated steering wheel

Keep your hands warm on the wheel and your audio on the right track. Drivers can control EcoSport's sound system and cruise control from a leather-trimmed, three-spoke steering wheel, which is heated to improve driver comfort in cold weather, especially when used in combination with EcoSport's heated windscreen, heated mirrors, heated front seats and extra heating vents for rear passengers.



### ② SYNC 3 display

A new centre console is ergonomically designed for easy operation and features fewer buttons. Ford's sophisticated SYNC 3 communications and entertainment system is supported by a floating 8-inch colour touchscreen, which can be operated with pinch and swipe gestures. A floating 6.5-inch colour touchscreen and 4.2-inch colour screen with Bluetooth connectivity and two USB inputs are also available.

